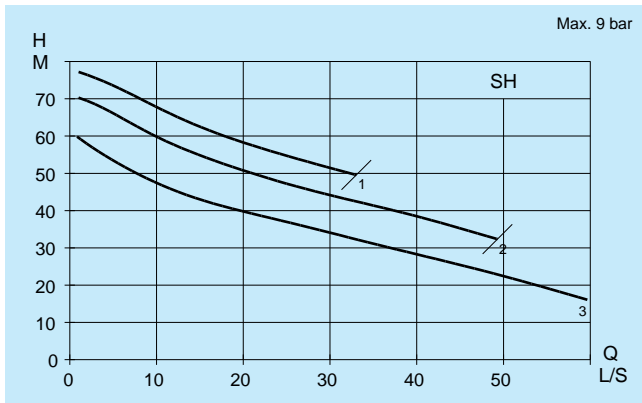


Curve reference N°
Kennlinien-Nr.
Courbe no
Curva di riferimento

Throughlet size (mm)
Freier Durchgang (mm)
Section de passage (mm)
Passaggio libero (mm)

1	76 Ø NEVA-CLOG
2	76 Ø NEVA-CLOG
3	76 Ø NEVA-CLOG



Material
Werkstoff
Matériaux
Materiale

Impeller
Lauftrad
Roue
Girante

(BS)	1452; Grade 260
(DIN)	GG 25
(NF)	FT 25 D
(SS)	14 01 25
(AISI/ASTM)	A 48; No 35 B

Material
Werkstoff
Matériaux
Materiale

Pump casing
Pumpengehäuse
Volute
Corpo pompa

Stator housing
Motorgehäuse
Enveloppe moteur
Alloggio statore

Shaft
Welle
Arbre
Albero

also available in:
auch lieferbar in:
également disponible en:
disponibile anche in:

Seal faces (outer)
GLRD produktseitig
Garniture mécanique extérieure
Tenuta esterna

(BS)	1452; Grade 260	1452; Grade 260	970: 1; 080 M 36		WCCo/WCCo
(DIN)	GG 25	GG 25	St 50-2	X 8 Cr Ni Mo 27 5	
(NF)	FT 25 D	FT 25 D	A 50-2	Z 12 CNS 25.20	
(SS)	14 01 25	14 01 25	14 15 50	14 23 24	
(AISI/ASTM)	A 48; No 35 B	A 48; No 35 B	SAE C 1035	329	

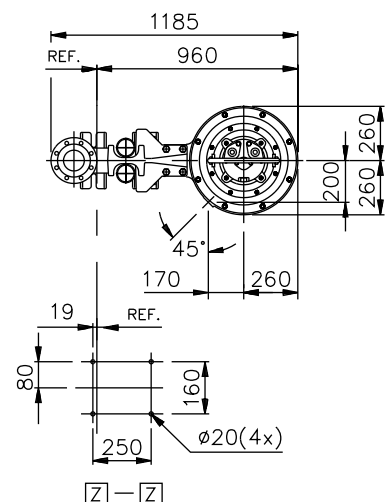
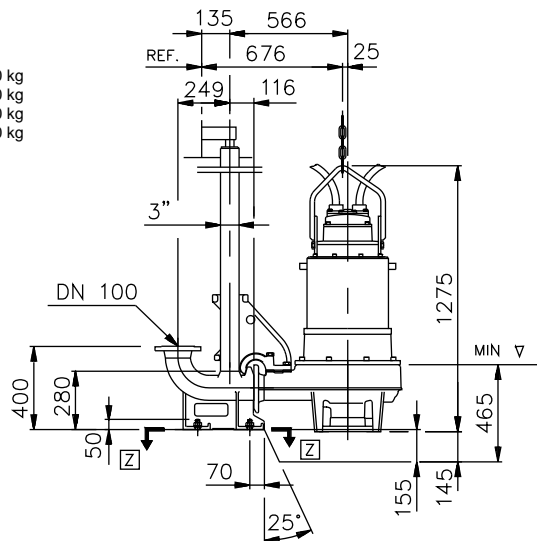
Further combinations of material in accordance with the conditions of use
Weitere Materialkombinationen nach Anwendungsbedingungen

Différentes combinaisons de matériaux sur demande
Sono disponibili altre combinazioni di materiali

CP

Dimensions in mm
Maße in mm
Dimensions en mm
Dimensioni in mm

Weight 560 kg
Gewicht 560 kg
Poids 560 kg
Peso 560 kg



Other discharge connection sizes upon request
Kupplungsfuß mit anderen Nennweiten auf Anfrage
Différents diamètres de refolement sur demande
Disponibili, a richiesta, piedi di accoppiamento in diametri diversi

Flange drilled according to:
Flansche gebohrt nach:
Bride percée selon norme:
Foratura flange secondo:
DIN 2533, UNI PN 16 (≤ DN, 150)
DIN 2532, UNI PN 10 (≥ DN, 200)

